



PARIS CARBON EXPERTS SUMMIT 2025

CONFIDENTIAL

Agenda

All together now – One Click LCA & SimaPro

Delivering LCAs at scale for construction and manufacturing

Managing and utilizing LCAs at scale

Going deeper – SimaPro and ENVI-met

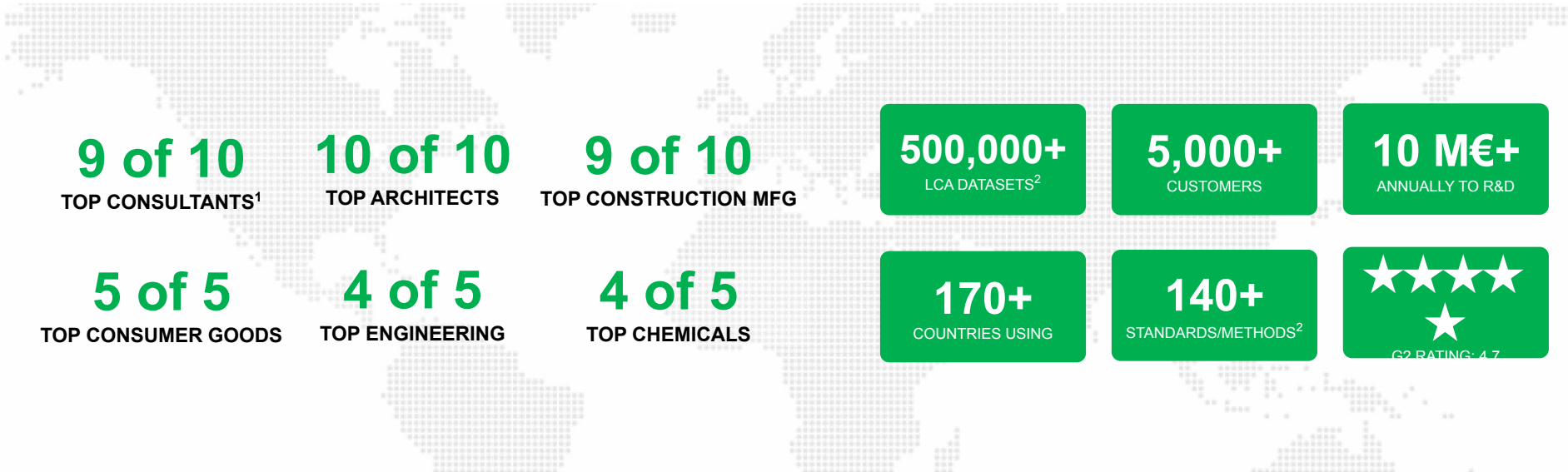
**One Click
LCA
&
SimaPro**

ALL TOGETHER NOW

World's #1 AI-powered LCA platform for every industry



We work towards powering a million makers of a zero-carbon future by 2035



Products

Partnerships

Memberships

Certifications

1) Sources: Environment Analyst, Architecture Quote, Statista, Consumer Goods Tech, Fortune Global 500. All for OECD, 2) see oneclicklca.com and simapro.com. OCL database: 500k+, SimaPro: ~250k.

Best-in class LCA software, data and services

Together, we power the makers of a zero-carbon future in every industry

CONSTRUCTION PRODUCTS



CHEMICALS & ENGINEERING



MEP & ELECTRONICS



CONSUMER GOODS & AGRIFOOD



CONSTRUCTION & DESIGN



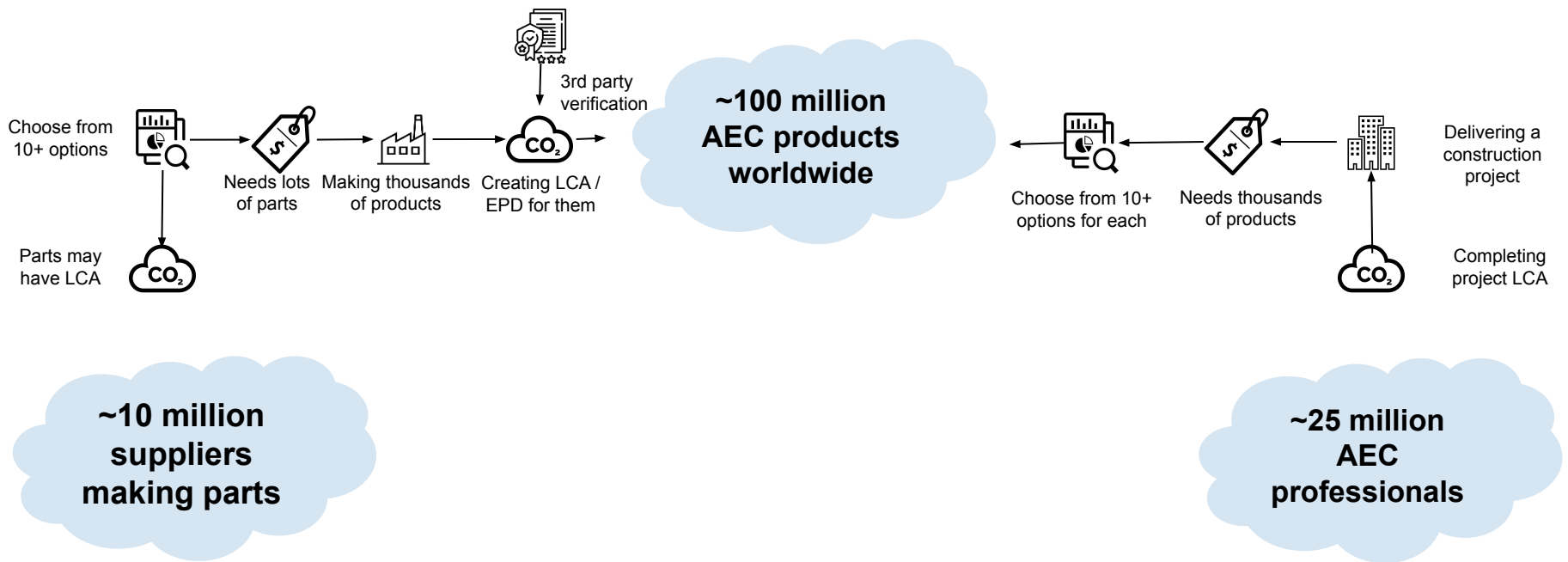
CONSULTING & SERVICES



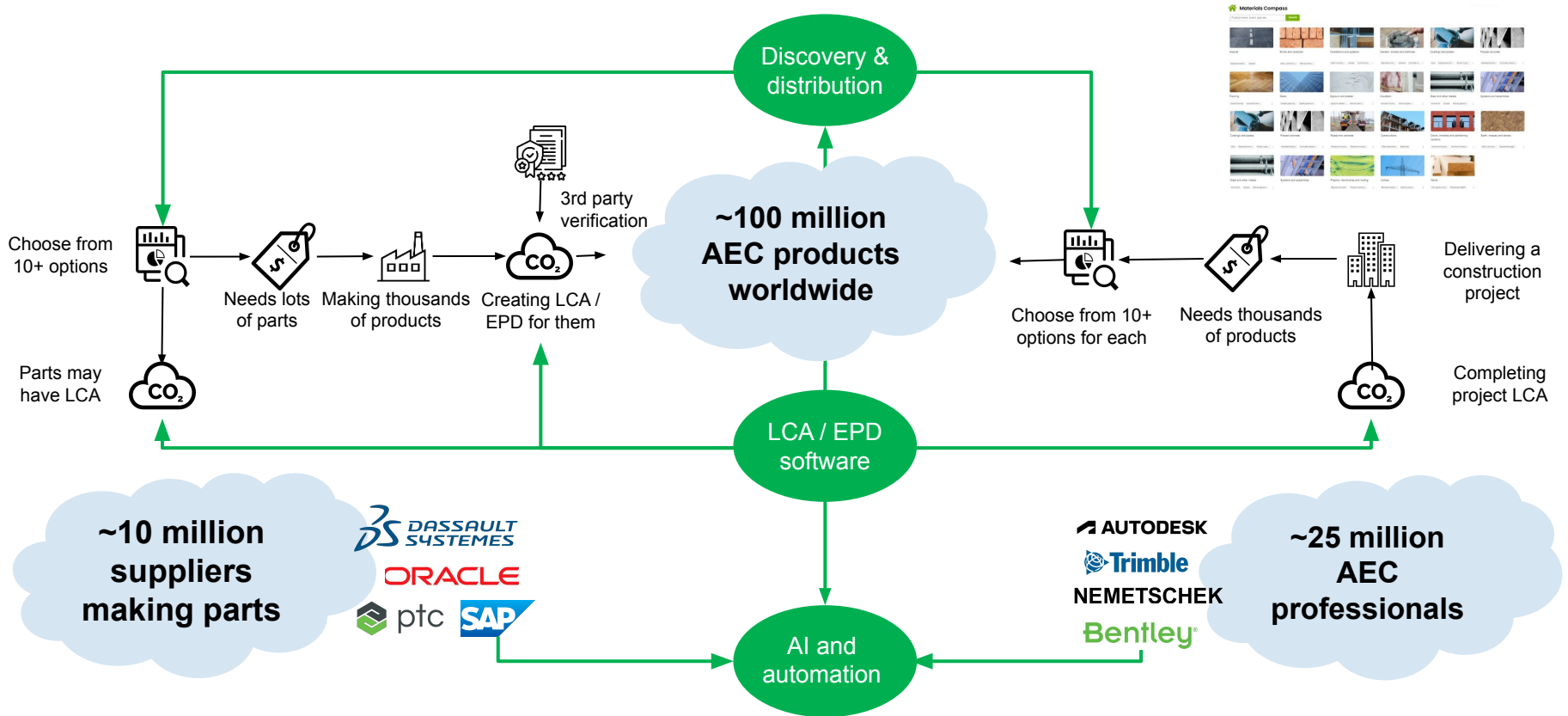
The supply chain from parts to products to projects is a vast one



To service this, the world has some 20 000 LCA practitioners and well below 1 000 EPD verifiers



This requires scaling and managing data flow across the industry



Together, we help customers scale & manage LCA cross industries



Our combined platform allows you to go both deeper and faster



LCA FOR BUSINESS

Focus on users & usability

Technology leader

Focus on AEC & manufacturing

Deep industry integrations

Global supplier database



BILLIONS OF PRODUCTS

Go faster

SimaPro

LCA FOR EXPERTS

Focus on science & data

Transparency leader

Sector-agnostic platform

Deep LCA inventories

Can model anything

What does this mean for you?



Ability to model anything in any sector

Support for ESPR and other regulations

Ability to access data at an inventory level



Higher investment in SimaPro and services

Access to more data & supplier specific datasets

Automation, analytics and other capabilities



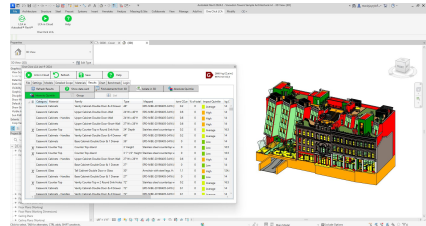
SCALING UP LCA FOR CONSTRUCTION

Integrated platform for a seamless end to end flow of LCA data



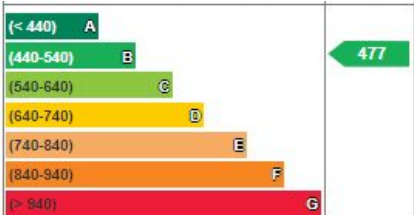
CREATION

Data collection & LCA automation



ECODESIGN

Finding better designs & products



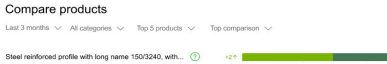
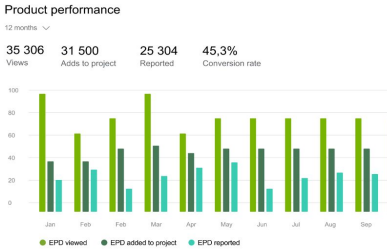
COMPLIANCE

Carbon, LCA, circularity, biodiversity



ANALYTICS

Understand your results & impact



Integrated platform for LCA helps you run a better business



Lower costs

Higher revenue

Intelligence for improvement

CREATION

ECODESIGN

COMPLIANCE

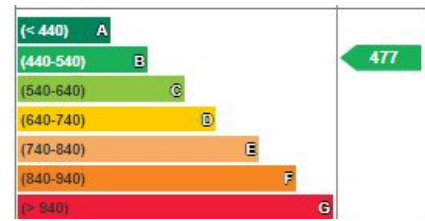
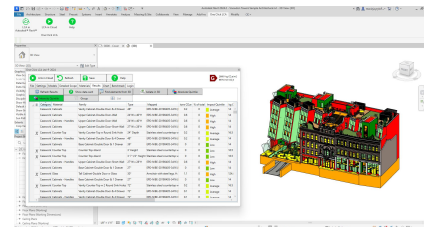
ANALYTICS

Data collection & LCA automation

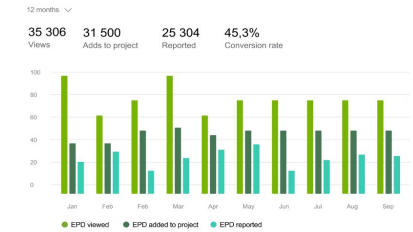
Finding better designs & products

Carbon, LCA, circularity, biodiversity

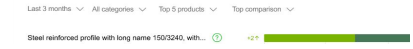
Understand your results & impact



Product performance



Compare products



All the world's LCA data integrated – over half a million datasets



EPDS FROM 60+ SOURCES

REGULATORY & COMPLIANCE

LCI DATABASES

*Expected during 2025

PROPRIETARY DATASETS

Construction & industrial data

Utility profiles

Assemblies

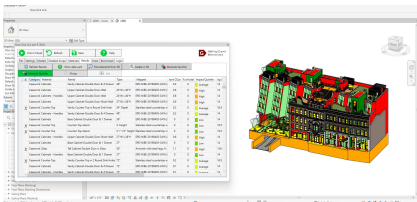
One Click LCA

DIRECT MANUFACTURER DATA

Lots of improvements in integrations, and a couple of new ones

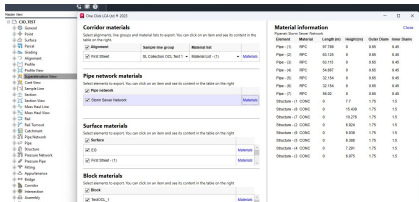
Autodesk Revit

LCA inside Revit (two-way) - plugin



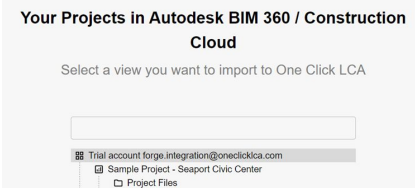
Autodesk Civil3D

Infrastructure LCA - plugin



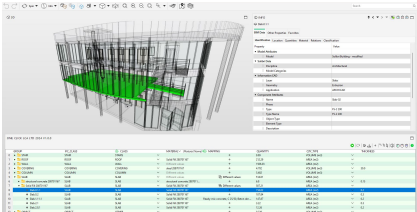
Autodesk BIM360/ACC

Import data from cloud services



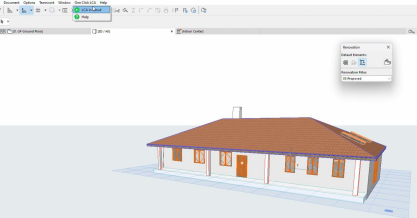
Solibri

Federate IFC files for the LCA



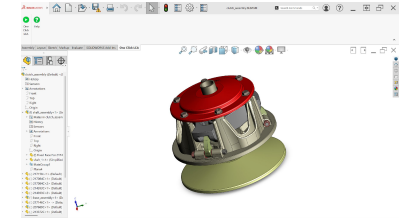
Archicad

Export BOM - plugin



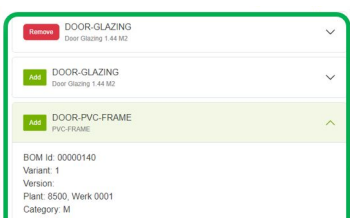
SolidWorks

Plugin



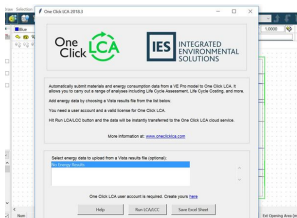
SAP HANA

Extension for BOM



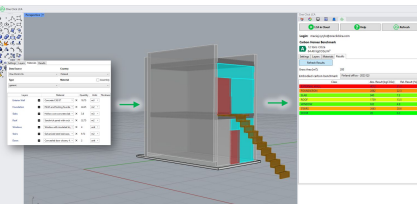
IES-VE

Native integration



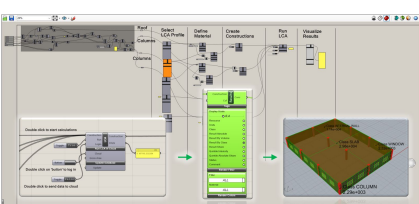
Rhino

LCA inside Rhino (two-way)



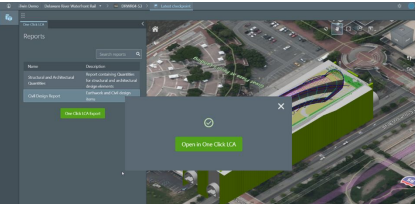
Grasshopper

Parametric LCA capability



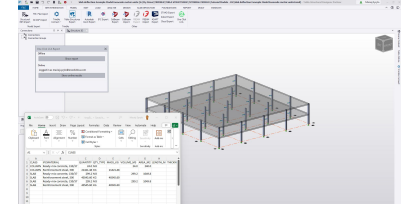
Bentley iTwin

Native integration



Tekla Structures

Native integration (also for TSD)



Instant feedback on your LCA, and tools for internal verification



Plausibility Checker for building LCAs

All checks

C

Check Grade

Check	Check name	Unit	Benchmark values	Project result	Typical range
✔	A1-A3 GWP	kg CO ₂ e/m ²		353	287 - 621
⚠	A1-A3 Mass	kg/m ²		960	1181 - 2861
⚠	Above Ground Building GWP	kg CO ₂ e/m ²		170	195 - 506
✔	Above Ground Building Mass	kg/m ²		774	496 - 1547
✔	B4-B5 to A1-A3 impact ratio			14	0.22 - 35
⚠	Building Technology GWP (material subtypes)	kg CO ₂ e/m ²		0.72	2.2 - 85
⚠	Building Technology Mass (data input section)	kg/m ²		0.19	0.96 - 19
⚠	Building Technology Mass (material subtypes)	kg/m ²		0.19	0.78 - 16
✔	CLT GWP	kg CO ₂ e/m ²		4.2	0.18 - 5.6
✔	CLT Mass	kg/m ²		16	0.14 - 17
✔	Concrete GWP (excluding precast walls)	kg CO ₂ e/m ²		73	63 - 230
✔	Concrete Mass (excluding precast walls)	kg/m ²		634	611 - 2018
✔	Doors GWP	kg CO ₂ e/m ²		1.7	0.78 - 8.8
✔	Doors Mass	ka/m ²		1.9	0.36 - 3.7

New, improved data import with AI enhanced data mapping



Flexible workflow and improved AI mapping, reducing unidentified data by up to 10x

1. File upload

2. Import settings

3. Column mapping

4. Review & filter

5. Combine data

6. Data mapping

Previous

Import

Data mapping

Map imported data to materials and resources from the database and review and correct errors and change mappings. [Read more](#)

Identified 1000

Unidentified

Name in imported data	Map resource	Mapping basis
Expanded polystyrene insulating	Expanded polystyrene insulating panel	AI mapping
Cellular PVC trim	Cellular PVC trim	AI mapping
Coated Steelpipes	Coated Steel pipes	AI mapping
Glasswool insulation	Glasswool insulation panels	AI mapping
Readymix Concrete High Strength	Readymix Concrete High Strength	Colleague mapping

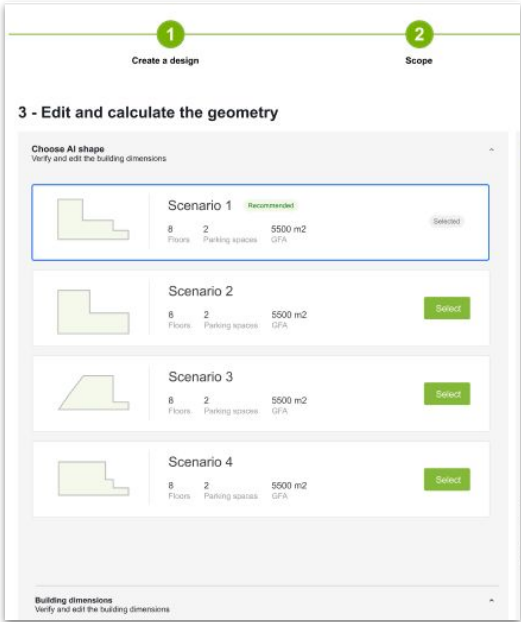
HC EXTENSION IN SINGAPORE

BREAKDOWN						STAGE	QBS	TYPE	EPO 1"	Transpiration	Waste
QTY	U										
1.00	pieces	EQ	Stone								
1.00	pieces	EQ	Stone								
1.00	m	EQ									
50.98	m2	EQ									
	U	EQ									
11.55	kg	APD	Macomer	111	14295						
1.00	pooried unit	APD		222	12359					28	90
105.24	pooried unit	APD		333	37492						
946.70	kg	APD	444	12385							
16.75	m3	APD	555	3343						39	
0.73	m2	APD	666	11111							
0.73	m2	APD	777	4920							38
11.55	kg	APD	Macomer	111	14295						
105.24	m3	APD		222	12359					28	90
105.24	kg	APD		333	37492						

Other recent improvements for construction LCAs

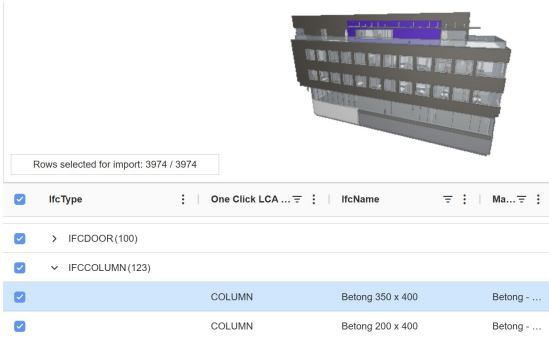
GENERATIVE DESIGN

Generate options automatically



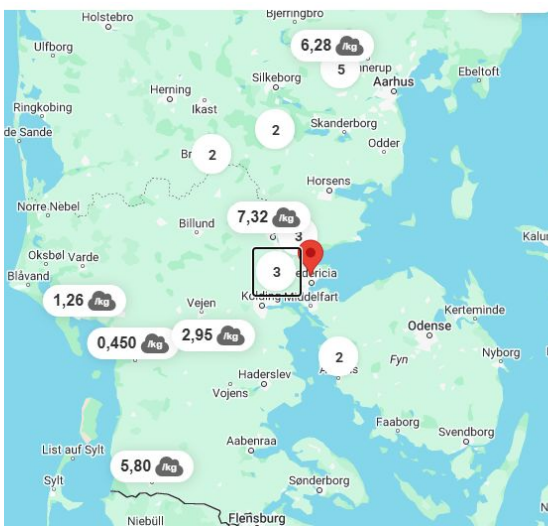
IFC IMPORT & VIEWER

Import and map IFC directly without BIM tools



FIND LOCAL SUPPLIERS

Find products close to your project





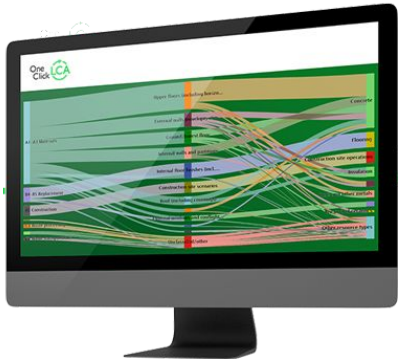
SCALING UP LCA FOR MANUFACTURERS

Integrated platform for a seamless end to end flow of LCA data



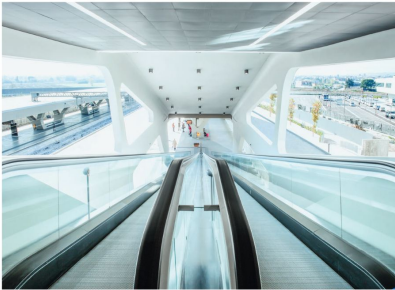
CREATION

Data collection & LCA automation



REPORTING

EPD generation & verification support



Environmental Product Declaration
Schindler 9500AE

DELIVERY

Pipeline your EPDs to the users

Global Materials

Lorem ipsum dolor sit amet, consectetur adipiscing elit. Nullam mi sapien, vehicula in tristique nec, gravida non lectus. Mauris venenatis luctus lectus, ut vehicula sem consectetur sed. Maecenas venenatis sit amet sem vel sodales. Etiam vitae tristique metus. Pellentesque eleifend vulputate condimentum. Quisque nulla neque, iaculis in ex e, sagittis pretium sem. Phasellus ultrices consectetur pharetra. Interdum et malesuada fames ac ante ipsum primis in faucibus. Donec convallis riset ut the fermentum fringilla. Integer vitae dictum turpis, no vestibulum justo.

Name: Global Materials
Website: www.global-m.com
Phone: +358 304834 034 334
Address: Forest street 55

Search

Our main product categories

We focus on these segments with years of experience. Our products rank highly on both environmental impact and quality.

Insulation
1302

Roofing
1302

Flooring
1302

ANALYTICS

Capture your business opportunities

Product performance

12 months

35 306 Views	31 500 Acts to project	25 304 Reported	45.3% Conversion rate
--------------	------------------------	-----------------	-----------------------

Compare products

Last 3 months | All categories | Top 5 products | Top comparison

Steel reinforced profile with long name 1500240, with...

Integrated platform for EPDs helps run a better business



~60 % of the costs

~40 % of the costs

The revenue impact

Intelligence for improvement

CREATION

Data collection & LCA automation

COMPLIANCE

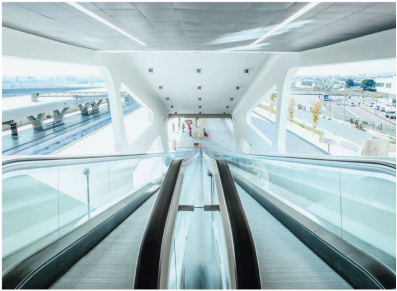
EPD generation & verification

DELIVERY

Pipeline your EPDs to the users

ANALYTICS

Capture your business opportunities



Environmental Product Declaration
Schindler 9500AE

Global Materials

Lorem ipsum dolor sit amet, consectetur adipiscing elit. Nullam mi sapien, vehicula in tristique nec, gravida non lectus. Mauris venenatis luctus lectus, ut vehicula sem consectetur sed. Maecenas venenatis sit amet sem vel sodales. Etiam vitae tristique metus. Pellentesque eleifend vulputate condimentum. Quisque nulla neque, laoreet in ex, sagittis pretium sem. Phasellus ultrices consectetur pharetra. Interdum et malesuada fames ac ante ipsum primis in faucibus. Donec convallis risus at risa fermentum fringilla. Integer vitae dictum turpis, no vestibulum justo.

Name: Global Materials
 Website: www.global-m.com
 Phone: +358 304834 034 334
 Address: Forest street 55

Search

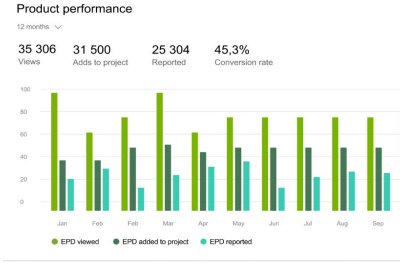
Our main product categories

We focus on these segments with years of experience. Our products rank highly on both environmental impact and quality.

Insulation
1202

Roofing
1302

Flooring
1402



Compare products

Last 3 months All categories Top 5 products Top comparison

Steel reinforced profile with long name 1500240, with...

We provide a streamlined process combining AI & expert verifiers



INTERNAL AND SUPPLY CHAIN DATA COLLECTION

Ask suppliers for
LCAs or BOM



Leverage the
integrations



Set up your
factory profiles



Validate the
data internally



INTERNAL & EXTERNAL VERIFICATION

Automated QA
tools



Validate the
data internally



AI-assisted third
party verification



EPD Quality Checker helps you catch errors before submitting



EPD Quality checker

Back ←

Helps you verify if your LCA modeling is accurate and complete. All the issues listed below should be addressed before submitting to verification.

Balance Values

Category	⋮	Input	⋮	Output	⋮	Unit	⋮	Project value	⋮	Accepted range	⋮
▼ Mass balance (O... (3)		5.14E+01		-3.51E+01		kg		31.58% !		-1% - 1%	
Packaging		0.00E+00		3.15E+00		kg		100% !		-1% - 1%	
Product material		4.81E+01		-4.44E+01		kg		7.73% !		-1% - 1%	
Manufacturing waste		0.00E+00		6.10E+00		kg		100% !		-1% - 1%	
Energy balance		-4.75E-02		0.00E+00		MJ		100% !		-1% - 1%	

Columns

Declared Unit And Materials Mass Alignment

Mass of declared unit (kg)	⋮	Total material mass (kg) ?	⋮	Number of raw material	⋮	Mass difference (kg)	⋮	Project value	⋮	Accepted range	⋮
----------------------------	---	----------------------------	---	------------------------	---	----------------------	---	---------------	---	----------------	---

Free, unlimited, internally verified project EPDs with Power Pack



This is allows making internally verified project EPDs at scale – these are not published by EPD programs

EPD Hub Submission & Verification

Submit for internal verification

Submit Project EPD for verification

Jump to a verification point

Submit to EPD Hub

Internal verification

ID	Project	Tool	Design	Sender	Verifier	Submitted ti...	Status
OCL-0000038	AAA_JohannaP...	LCA for LEED, I...	testf	Johanna Parisi	Evgenii Bakulkin	1 Aug 2024	Under verification
OCL-0000509	Product	Luminaire EPD ...	SW-15026	Mariia Lavreniuk	Evgenii Bakulkin	26 Nov 2024	Rejected
OCL-0000984	Aliaxis product d...	EPD Generator f...	Fitting A	Lorelia le Gouvello	Evgenii Bakulkin	21 Mar 2025	Under verification
OCL-0001164	007 Scaling EPDs	EPD Generator f...	Height-adjustable des	Panu Pasanen	Evgenii Bakulkin	9 Apr 2025	Under verification

Coming: Recommendation service to detect & fill gaps in the BoM



AI resources suggestions for ?

All

Search

Q

All filters (8)

Clear all

All (11)

Favorite

<input type="checkbox"/> Resource name	Type	GWP Kg Co2	Ranking	Category
<input type="checkbox"/> Product raw materials - A1				
<input checked="" type="checkbox"/> Coating one with technical name 300/100	? ★ 📄	100	CO ₂	
<input type="checkbox"/> Coating one with technical name 300/100	? ★ 📄	100	CO ₂	
<input checked="" type="checkbox"/> Resin material from some country	? ★ 📄	100	CO ₂	
<input type="checkbox"/> Glue material with extreme durability	? ★ 📄	100	CO ₂	
<input type="checkbox"/> Coating one with technical name 300/100	? ★ 📄	100	CO ₂	
<input type="checkbox"/> Packaging materials - A3				
<input checked="" type="checkbox"/> Coating one with technical name 300/100	? ★ 📄	100	CO ₂	
<input checked="" type="checkbox"/> Glue material with extreme durability	? ★ 📄	100	CO ₂	
<input type="checkbox"/> Silicone material - France - 20g	? ★ 📄	100	CO ₂	



MANAGING AND UTILISING LCAS AT SCALE

Portfolio analytics for managing AEC LCAs at a large scale



Instant view of all your projects – track their results and targets –even what EPDs your projects use the most

One Click LCA

ProjectsMaterials CompassSustainability ToolsNEWAnalytics

InternalLicencesHelpJani Tieraala

Portfolio Analytics

Filter report and summary.

6/6
Selected projects

45,281
Total GWP

60.8 kg CO₂e/m²
Average GWP/GFA

1,607.2 kg/m²
Average mass intensity

94.2%
Average circularity

Projects total vs target

Below (5)Over (1)Not set (0)

EPD Usage Analytics

Filters (0)

SimpleAdvanced

Project name	Country	Total GWP t CO ₂ e	Total GWP/GFA kg CO ₂ e/m ²	Mass intensity kg/m ²	Circularity	Total vs target	Total vs baseline	Status Click to edit	Tags Click to edit	Created Year	Type	Stage	Frame
▼ Metro Point		1179	682	832	99.9 %	-9.0%	-19.6%	Completed	Top performerNorth BU	2025	Office building	7 - In Use	Concrete fra...
Baseline		1467	849	1610	100.0 %					2025			
Final		1179	682	832	99.9 %					2025			
> Cedar Hall		2716	581	1728	100 %	-7.8%	-16.2%	Ongoing	South BU	2025	Educational buil...	6 - Handover an...	Concrete fra...
> Echo Ridge		363	474	1292	100.0 %	-24.8%	-42.1%	Ongoing	West BU	2025	Educational buil...	6 - Handover an...	Timber frame
> Supply Base		8940	504	3278	66.8 %	-8.3%	-8.8%	Not Started	East BU	2025	Warehouse	5 - Construction	Not determin...
> Storage Hub		10184	561	1227	98.7 %	12.2%	0.5%	Delayed	Flagged for review+2	2025	Warehouse	5 - Construction	Steel frame
> Bright Tower		21903	563	1286	99.5 %	-10.6%	10.7%	Not Started	Top performerNorth BU	2025	Office building	4 - Technical De...	Other/mixed ...

Manufacturer Commercial Pack – generate and capture demand



Ensure your data reaches all potential users and capture demand at the right time

One Click LCA Projects Materials Compass Sustainability

MANUFACTURER PAGES

Internal • Licences • Help • Steven (One Click LCA) •

Settings My lists My bookmarks Add products

3624
search results

Website: <https://oneclicklca.com>
Email: info@oneclicklca.com
Phone: +358 10 322 0000
Address: Suolahdenkatu 10 B, 00500 Helsinki, Finland

Product name, brand, type etc.

Filters (1) Clear all

Oil-immersed power transformer

Oil-immersed power transformer

Oil-immersed pad mounted distribution transformer

Oil-immersed power transformer

Composite tension insulator for overhead transmission lines, polymeric

EPD USAGE ANALYTICS

EPD Usage Analytics for your products

Product performance

12 months

1129 Viewed 312 Added to Projects 657 Reported

● EPD viewed ● EPD added to project ● EPD reported

Top categories

Viewed Added to Projects Reported 1 month

HVAC

Top products

Viewed Added to Projects Reported 1 month

Air cooled chiller with propa...

Project Usage Analytics

Project DASHBOARD

One Click LCA Ltd

Project Filter Export

Project name	Project ID	User's company	Project country	Project type	Project stage	Project address	Project floor area	Project creation	Last update date
Vehilä Oliveira	066C26267616060613	DEKAFOLUET s.r.l.	Italy	Apartment building	2 - Concept design - sch.		800 m²	18.06.2025	
CLASSIFED	578157776160608817	Freemaster	Italy	Apartment building	5 - Construction /testing t...		14400 m²	01.03.2025	
Veske Test	57815777616060880F	One Click LCA Ltd		Apartment building	2 - Concept design - sch.		4000 m²	15.07.2025	
LSP and Xcelis	686770676160707591	Axelon Mitali Oodexo	India	Apartment building	2 - Concept design - sch.	Hamilton, ON, Canada	7100 m²	28.07.2025	28.07.2025
Essement Study	686770676160761715	Not disclosed		Apartment building	2 - Concept design - sch.	Church Street, London, ...	50000 m²	28.07.2025	28.07.2025
Siete Sorelas das Culturas	686770676160761616	Freemaster	Finland	Office building	4 - Technical design - pr...	Rua São Cristóvão, 30 ...	60000 m²	28.07.2025	28.07.2025
Cosmoska	686770676160761616	Freemaster		Apartment building	2 - Concept design - sch.	Cosmoska, Warszawa	1519000 m²	28.07.2025	28.07.2025
Indylink 1	686770676160761616	Freemaster		Apartment building	4 - Technical design - pr...	Warszawa, Polska	1519000 m²	28.07.2025	28.07.2025
Indylink 1	686770676160761616	Freemaster		Apartment building	4 - Technical design - pr...	Warszawa, Polska	1519000 m²	28.07.2025	28.07.2025
Vedulek Study	686770676160761616	Freemaster		Apartment building	4 - Technical design - pr...	Warszawa, Polska	15200 m²	28.07.2025	28.07.2025
Piet	686770676160761616	Freemaster		Apartment building	2 - Concept design - sch.	Warszawa, Polska	15200 m²	28.07.2025	28.07.2025

LEAD GENERATION

One Click LCA Ltd

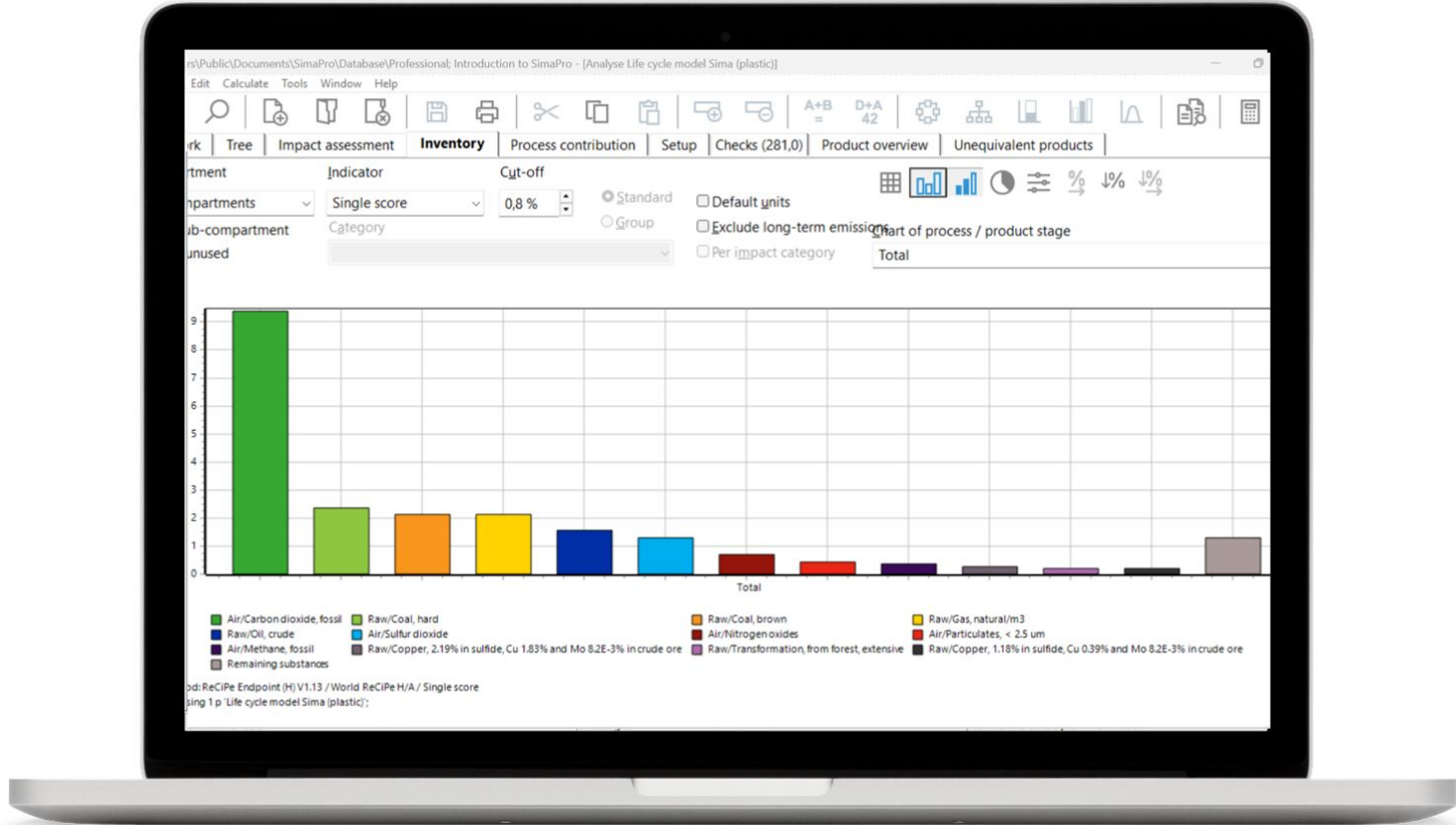
Project Filter Export

Type	Date	Company	Contact person	Email	Phone	Material name	Quantity	Unit	Delivery date	Project loca
Quote	09/07/2025	One Click LCA Ltd	Manumon Mathew	manumon.mathew@onecl...		Composite cement, calcul...		kg	08/28/2025	Q Wellness
Quote	09/07/2025	One Click LCA Ltd	LCA GA Automation 4	lcapa.automation@onecl...	123456789	Glass wool insulation in ba...	100	box	08/07/2025	India
Quote	09/07/2025	One Click LCA Ltd	LCA GA Automation 4	lcapa.automation@onecl...	123456789	Glass wool insulation in ba...	100	box	08/07/2025	India
Info	09/06/2025	One Click LCA Ltd	Manumon Mathew	manumon.mathew@onecl...						
Quote	09/06/2025	One Click LCA Ltd	Manumon Mathew	manumon.mathew@onecl...		Fixed wooden framed wind...	1	m²		Singapore
Quote	09/06/2025	One Click LCA Ltd	Manumon Mathew	manumon.mathew@onecl...		Engineered aggregates, C...	2	kg		Singapore
Quote	09/06/2025	One Click LCA Ltd	Manumon Mathew	manumon.mathew@onecl...		Engineered aggregates, C...		kg		Catar
Quote	09/06/2025	One Click LCA Ltd	Manumon Mathew	manumon.mathew@onecl...		Cross laminated timber gl...		m²		Snow Falls S
Quote	07/29/2025	One Click LCA Ltd	Lotta Taskkala	lotta.taskkala@oneclickl...		Water resistant gypsum pl...	400	m²	09/05/2025	Helsinki, Suo
Quote	07/29/2025	One Click LCA Ltd	LCA GA Automation 4	lcapa.automation@onecl...	123456789	Glass wool insulation in ba...	100	box	07/24/2025	India
Quote	07/23/2025	ICB	Nanda Kadam	nanda.kadam@icbgroup.co...		Fixed tube heat exchang...		unit		India
Quote	07/23/2025	ICB	Nanda Kadam	nanda.kadam@icbgroup.co...		Fixed tube heat exchang...		unit		India

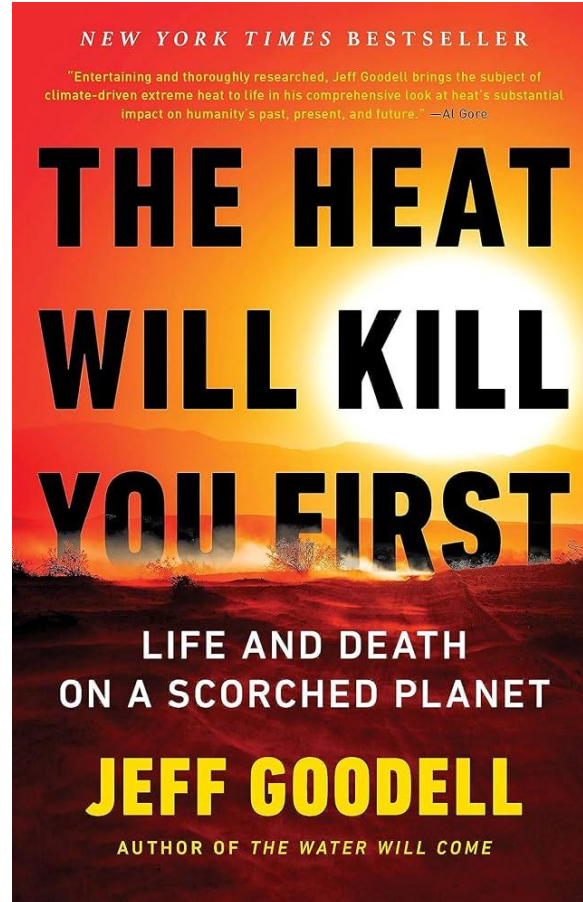
GOING DEEPER – SIMAPRO AND ENVI-MET



SimaPro Craft – tool of choice for LCA practitioners

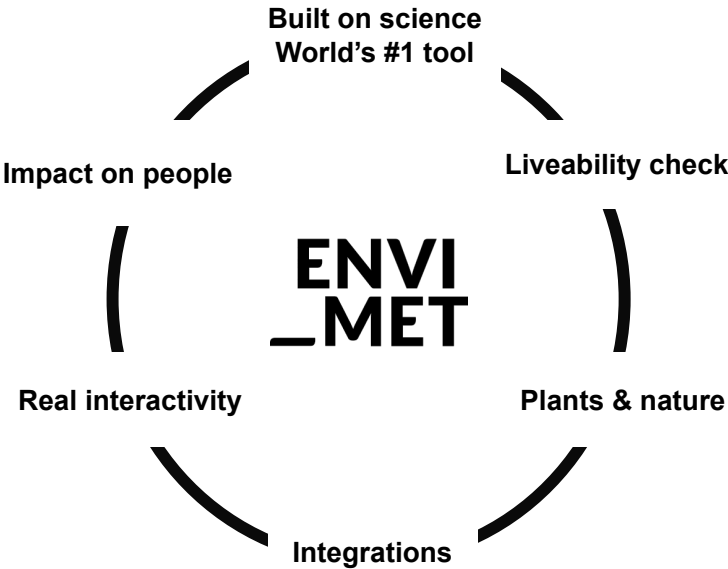
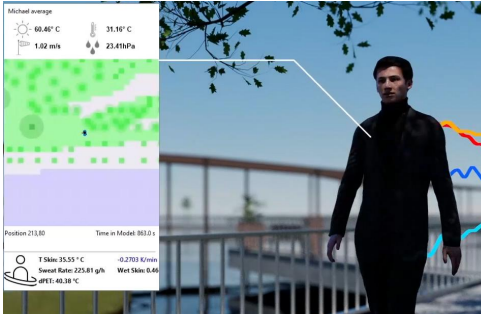


Mitigation alone is not enough to deal with climate change

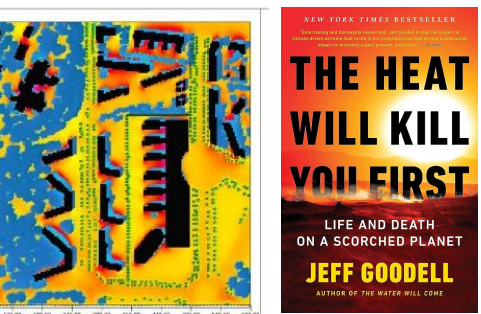


ENVI-met – holistic and realistic microclimate simulation

ACTUAL HUMAN EXPERIENCE



PREDICT & REDUCE HEAT STRESS



AIR, SOIL, BUILDINGS & PLANTS



NATURE-BASED SOLUTIONS

